

Inclusive by Design

Nicky Thurston, Inclusion Manager (She/her)
Kent Fire and Rescue Service

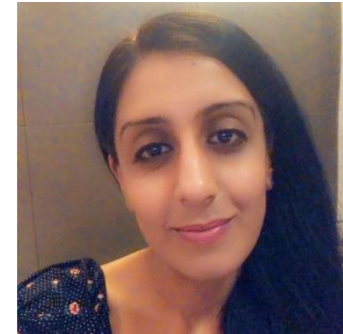
Collective Representation



NFCC
National Fire
Chiefs Council



AFSA
Asian Fire Service Association



everyone
together



**Kent Fire &
Rescue Service**

together

Fit for the future – impacts to PPE

- Widening scope of services
- Global challenges in procurement
- Greater climate variation - heat, wildfires, flooding and water scarcity
- Changes to environment - methods of construction, technology and innovation – *new emerging threats, including from Lithium-ion batteries.*
- Interchangeability and consistency
- **Diversity of people**

So what is Inclusion by design

It is putting your inclusive intent at the start of the project. It is putting your inclusive intent at the start of the project.

The NFCC PPP Board has representation from both AFSA (National Advisor Jagtar Singh) and WFS (Vice chair Caroline Anderson, supported by Nicola Bottomley , (Gloucs FRS and Peggy Male from West Mids FRS)

Intention without action is
an insult to those who
expect the best from you.

Andy Andrews

 quote fancy

everyone
together



**Kent Fire &
Rescue Service**

together